

ROBERT F KENNEDY PK-8 ELEMENTARY SCHOOL



RIDE Rhode Island
Department
of Education



Providence
Schools



DOWNES CONSTRUCTION COMPANY
Building Excellence Since 1934



O&G Industries

Tecton
ARCHITECTS



ROBERT F KENNEDY PK-8 ELEMENTARY SCHOOL



RIDE
Rhode Island
Department
of Education



Providence
Schools



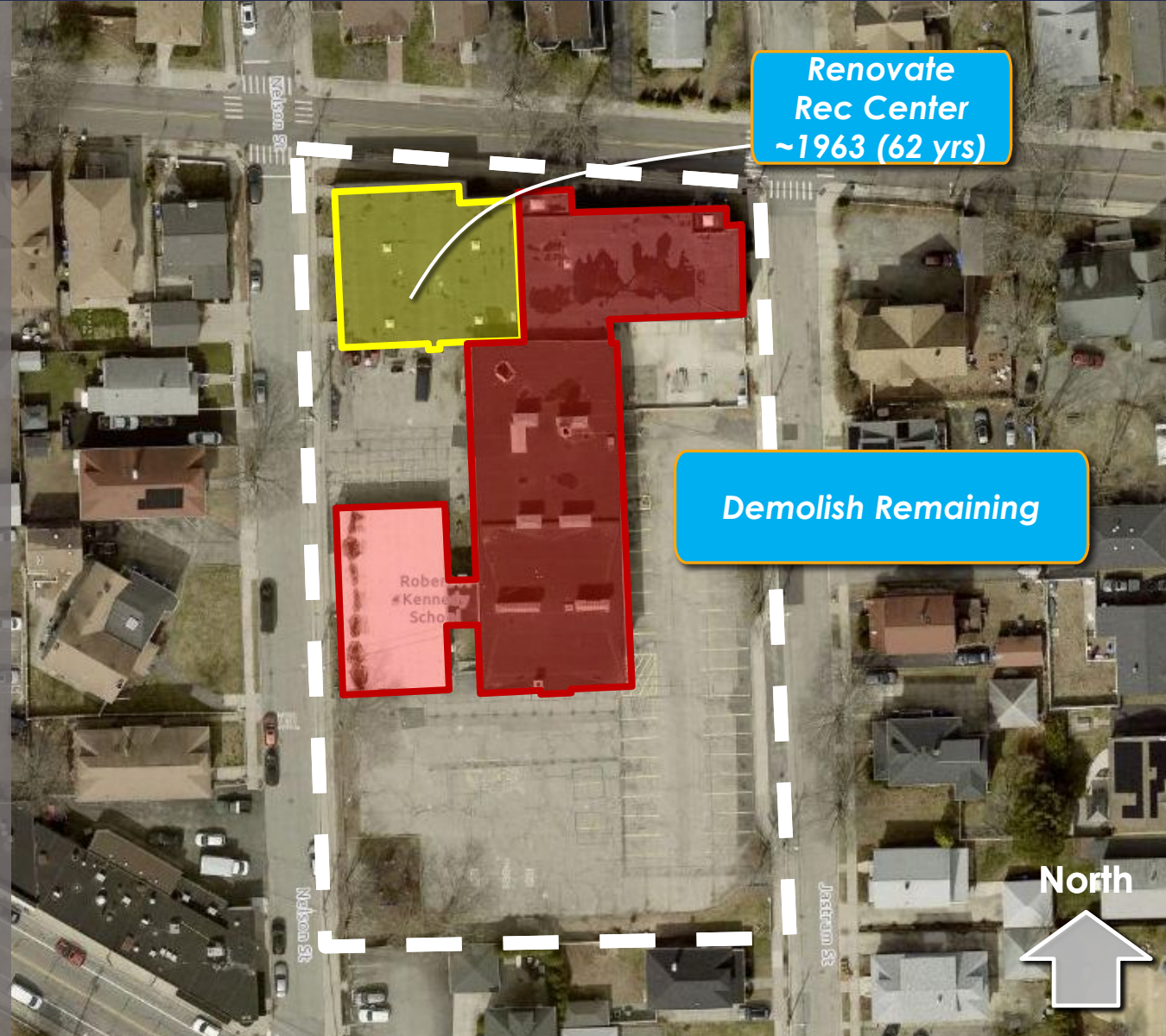
DOWNES CONSTRUCTION COMPANY
Building Excellence Since 1934



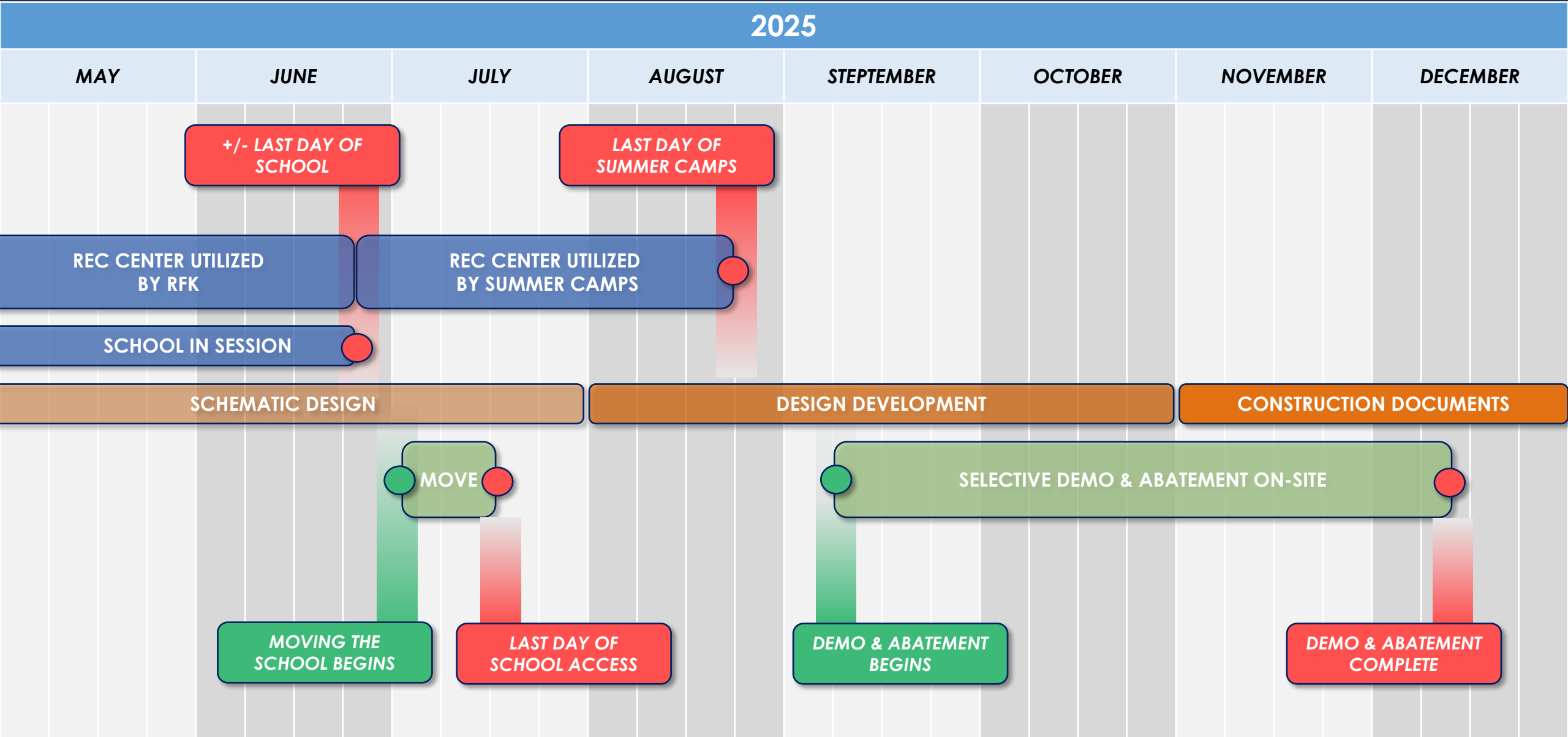
Tecton
ARCHITECTS

NEW PK-8

- 3-Track Elementary School
- 4-Track Middle School
- 858 Students
- 4 Stories
- \$75,146,684 Total Project Cost
- Occupancy for 2027/28 Year



ROBERT F KENNEDY PK-8 ELEMENTARY SCHOOL



ROBERT F KENNEDY PK-8 ELEMENTARY SCHOOL



RIDE
Rhode Island
Department
of Education



Providence
Schools

D DOWNES CONSTRUCTION COMPANY
Building Excellence Since 1934



Tecton
ARCHITECTS

Recreation Center Improvements

- *Code & Life Safety Upgrades*
- *Heating, Ventilation & Air
Conditioning (HVAC)*
- *Building Envelope*
- *Security & Access Control*

Under Development

- *Building Programming*
- *Building Design*
- *Building Size, Placement, & Height*
- *Exterior Playscapes*
- *Bus/Parent Pick-Up & Drop Off*

ROBERT F KENNEDY PK-8 ELEMENTARY SCHOOL



RIDE
Rhode Island
Department
of Education

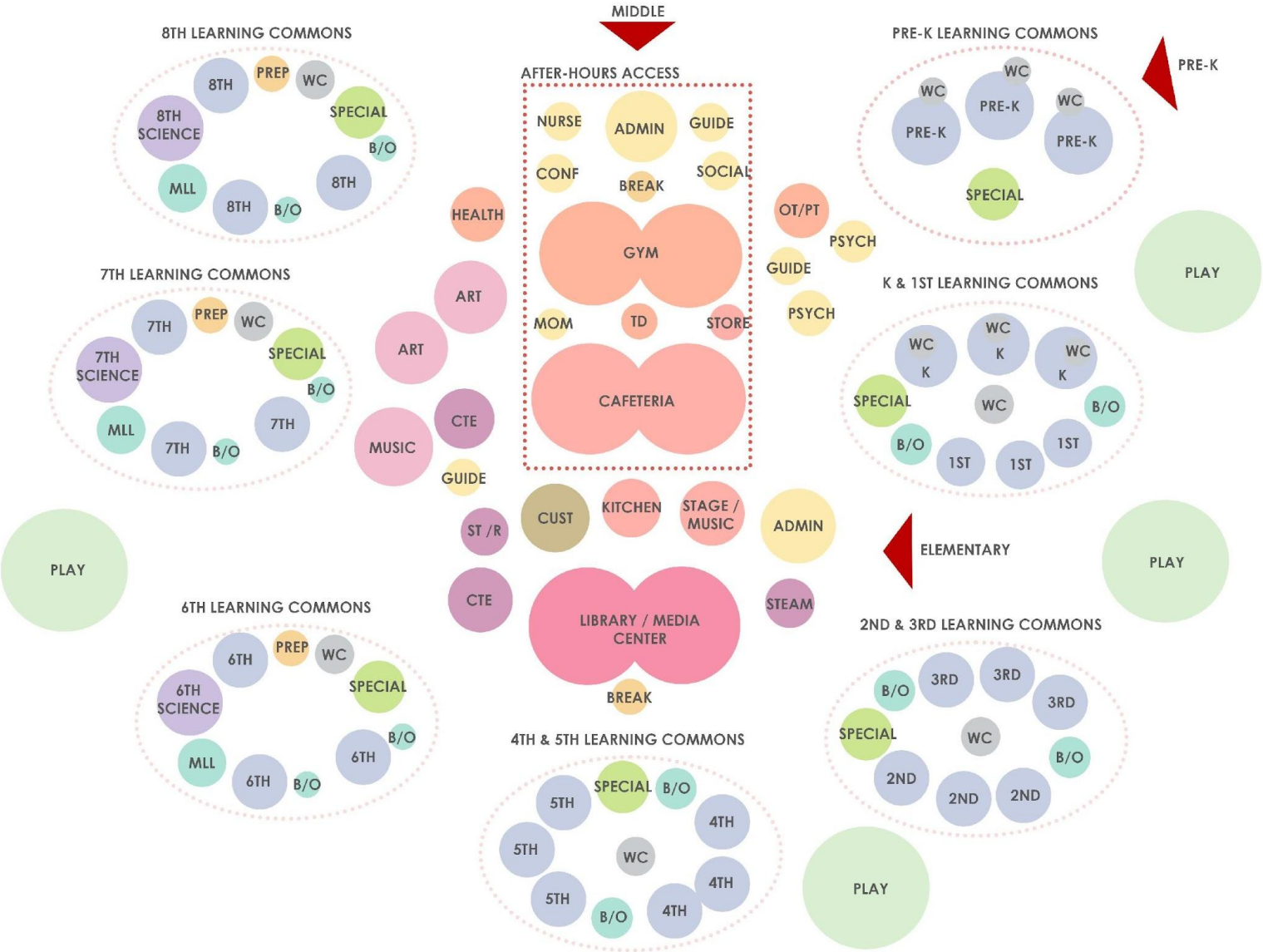


Providence
Schools

DOWNES CONSTRUCTION COMPANY
Building Excellence Since 1934



Tecton
ARCHITECTS



ROBERT F KENNEDY PK-8 ELEMENTARY SCHOOL



RIDE
Rhode Island
Department
of Education



Providence
Schools

DOWNES CONSTRUCTION COMPANY
Building Excellence Since 1934



Tecton
ARCHITECTS

